

New!

JALITE AAA

"JALITE AAA...
Extraordinary
performance to
satisfy new
International
Standards"

Telephone:

+44 (0) 1268 242300

Fax:

+44 (0) 1268 274148

Web:

www.jalite.com

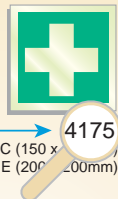
www.jaliteaaa.co.uk

To order any of the signs
illustrated, simply;

1. Quote the product code
of your chosen sign.

i.e:

Product
code

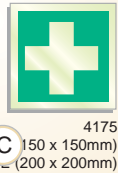


4175
C (150 x 150mm)
E (200 x 200mm)

2. Quote the size code of
your choice.

i.e:

Size code



4175
C (150 x 150mm)
E (200 x 200mm)

3. Confirm either self
adhesive vinyl (V) or
Rigid PVC (R).

i.e: 4175 C (V)

4. Quote the quantity of
signs you require.

i.e: 4175 C (V) x 25

Photoluminescent First Aid Location Signs

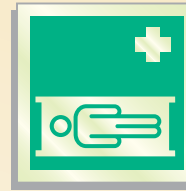
- ◇ JALITE AAA emergency first aid equipment signs are designed specifically to be conspicuous in both normal conditions and in darkness. They act as constant reminders of the location and different types of first aid equipment available.

First aid facility



4175
C (150 x 150mm)
E (200 x 200mm)

Stretcher



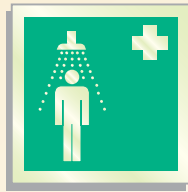
4387
C (150 x 150mm)
E (200 x 200mm)

Eye wash facility



4388
C (150 x 150mm)
E (200 x 200mm)

Emergency shower



4389
C (150 x 150mm)
E (200 x 200mm)

Drinking water



4390
C (150 x 150mm)
E (200 x 200mm)

Hand washing facility



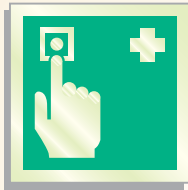
4391
C (150 x 150mm)
E (200 x 200mm)

First aid telephone



4392
C (150 x 150mm)
E (200 x 200mm)

First aid call point



4393
C (150 x 150mm)
E (200 x 200mm)

Breathing apparatus



4394
C (150 x 150mm)
E (200 x 200mm)

Defibrillator



4395
C (150 x 150mm)
E (200 x 200mm)

Doctor

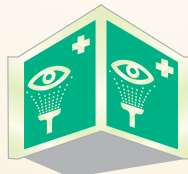


4396
C (150 x 150mm)
E (200 x 200mm)

Rigid PVC Panoramics



4175
P15 (150mm high)
P20 (200mm high)



4388
P15 (150mm high)
P20 (200mm high)



4389
P15 (150mm high)
P20 (200mm high)



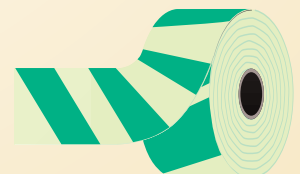
4392
P15 (150mm high)
P20 (200mm high)



4395
P15 (150mm high)
P20 (200mm high)

JALITE AAA self adhesive safe condition tape

Product code	Roll size	Product code	Roll size
GT0504	4cm x 5m	GT1004	4cm x 10m
GT0508	8cm x 5m	GT1008	8cm x 10m



Suggested application uses:

GT0504 - Sufficient length for highlighting both sides of a free standing emergency eye wash station.

GT1004 - For highlighting free standing emergency equipment, portable emergency equipment and first aid cupboards/boxes.

GT0508 - Ideal for highlighting small, first aid station areas containing emergency equipment.

GT1008 - Ideal for highlighting safe areas within premises for disabled occupants.

