



Proudly Made in the U.S.A.

Phone: 1.877.4DEPLOY
Fax: 215.354.1413

2007 Product Catalog



Manufacturers of
PRO-LITE
SPINEBOARDS®

www.prolitespineboards.com

EXCITING NEW PRODUCTS!

MP Carrier Tow Bar Attachment

- Tow bar attachment is very fast, easy to install and operate
- For use with most ATV's, personal water crafts, or snowmobiles
- Made of 1" painted steel square tube
- Draw bar portion is pinned in place for easy removal or replacement
- Measures 34" x 24" x 2", unit can be left attached to the MP Carrier or dismantled and stored in the MP Carrier

Product number: 722TOW



EXCITING NEW PRODUCTS!



- Padded board splints with patient safe rounded corners, ½ x 3" solid wood core
- Yellow 6.5 mil. vinyl covering
- Splints have ½" foam single sided padding
- Huge size selection, custom sizes available
- Carrying bag will hold 6 or more splints
- Highly visible yellow, allows rescuer to see residual blood

Yellow Jacket Padded Board Splint

- 912 12" Yellow Jacket Padded Board Splint
- 915 15" Yellow Jacket Padded Board Splint
- 916 16" Yellow Jacket Padded Board Splint
- 918 18" Yellow Jacket Padded Board Splint
- 924 24" Yellow Jacket Padded Board Splint
- 936 36" Yellow Jacket Padded Board Splint
- 942 42" Yellow Jacket Padded Board Splint
- 948 48" Yellow Jacket Padded Board Splint
- 954 54" Yellow Jacket Padded Board Splint



Yellow Jacket Padded Board Splint Set

- 900 Set (2 each: 15", 36", 54")
- 900K Set (2 each: 15", 36", 54") with case

Splint Carrying Case

- Yellow heavy duty vinyl splint carrying case
- Easy wipe clean vinyl
- Splints load in from the end for easy access, Velcro® closure
- Sturdy polypropylene handle

- 900B Yellow Jacket Padded Board Splint Case, only

EXCITING NEW PRODUCTS!

Rapid Tool Guard™ **ANTI-CORROSION TOOL PROTECTOR**



- Use to protect hydraulic rescue tools, axes, pry bars, saw blades, bolt cutters, air tools, drills and drill bits, router bits, wire and cable cutters, strippers, pliers, shears, knives, ratchets and much more!
- Prevents rust on hand tools, blades & bits to improve performance and extend tool life.
- Penetrates deep to seal out harmful moisture and prevent corrosion.
- RAPID TOOL GUARD will dry after application to prevent sticky, slippery surfaces that attract dirt and dust like most lubricants and corrosion protection products do.
- Resists oil and dirt build-up.

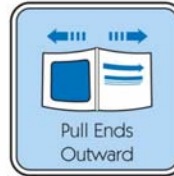
Product numbers: 700TG, single can
700TG/12, case of 12

Directions For Use:

To protect tools during storage: When possible, clean tool with a cleaner/degreaser or wipe clean with a rag. If tool has existing rust, use steel wool to remove rust before treatment. Spray a light, even coat of RAPID TOOL GUARD over tool to protect metal surfaces. Allow a few minutes to dry and wipe lightly with a cloth or for best results allow to dry overnight.

HOT & COLD COMPRESSES

RAPID COLD



No more impact activation, leakage on patients, or failures during storage



Features a convenient slip-off clip that activates cold pack



Zero % failure guarantee. Rapid Cold will work every time



Instant activation provides instant, long lasting cold below 32°



No more impact activation, leakage on patients, or failures during storage



Features a convenient slip-off clip that activates cold pack



Zero % failure guarantee. Rapid Heat will work every time



Instant activation provides instant, long lasting heat exceeding 130°

RAPID HEAT



Product Numbers:

- 2000 Rapid Cold, 24 case, 4 inner boxes of 6 enclosed
- 2004 Rapid Cold, 24 case, loose with divider
- 2006 Rapid Cold, pack of 6
- 2050 Rapid Heat, 24 case, 4 inner boxes of 6 enclosed
- 2054 Rapid Heat, 24 case, loose with divider
- 2056 Rapid Heat, pack of 6



PATIENT MOVING & HANDLING EQUIPMENT



PRO-LITE
SPINEBOARDS®

- Seamless design prevents fluids from entering and eliminates cross-contamination
- With the unique design, two boards can be stored together in less than 4" of space
- Foot section is angled slightly downward to assist rescuer in auto extrication
- Only board that provides natural curvature of the lower extremities
- Offers better patient centering and requires much less padding
- Compatible with all head immobilization devices
- Unlimited single patient weight capacity
- Minimal deflection under maximum load
- Ultra light weight: 11 lbs.
- Size: 72" x 16" x 2 1/4"
- 16 - 2" x 5 1/4" hand holes
- Tapers from 16" to 14" at foot end
- 100% guarantee for the life of the spineboard under normal conditions
- Available with speed clip pins for a small fee
- Guarantee not to warp for the life of the spineboard
- Custom Mold-In graphics available for an additional fee

Product number: 716

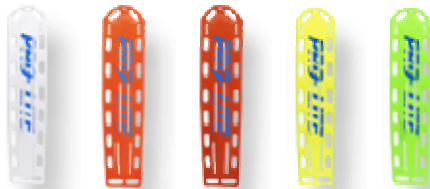
Flotation

The Pro-Lite™ Spineboard (716) will float with up to 250 lbs. on it

Stock Colors

White, Orange, Red, Neon Yellow, Neon Green, Blue

Custom colors available for a small fee, minimum quantities apply



Tactical Use

The PRO-LITE™ Spineboard is also available in a non-reflective black finish for use in the TEMS (Tactical Emergency Medical Support) environment.

PATIENT MOVING & HANDLING EQUIPMENT

- Guaranteed 100% x-ray translucent between hand holes. No rods, rails, runners, or slots in x-ray field
- Stiffening system in handgrips makes the XT the strongest x-ray translucent (between the hand holes) spineboard available
- Two boards can be nested together in less than 4" of space
- Seamless design prevents fluids from entering and eliminates cross-contamination
- 100% guarantee for the life of the spineboard under normal usage
- Minimal deflection under maximum load
- Unlimited single patient weight capacity
- Offers better patient centering and requires much less padding
- Available with speed clip pins and reflective strips, each for a small fee
- Compatible with all head immobilization devices
- Guaranteed not to warp for the life of the spineboard under normal usage
- Weight: 13 lbs.
- Size: 72" x 16" x 2 1/4"
- Tapers from 16" to 14" at foot end
- 16 - 2" x 5 1/4" hand holes
- Custom Mold-In graphics available for an additional fee

Product Number 717

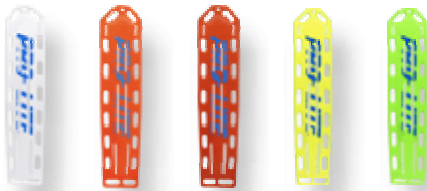
Flotation

The Pro-Lite™ XT Spineboard (717) will float with up to 250 lbs. on it

Stock Colors

White, Orange, Red, Neon Yellow, Neon Green, Blue

Custom colors available for a small fee, minimum quantities apply



Tactical Use

The PRO-LITE™ XT Spineboard is also available in a non-reflective black finish for use in the TEMS (Tactical Emergency Medical Support)

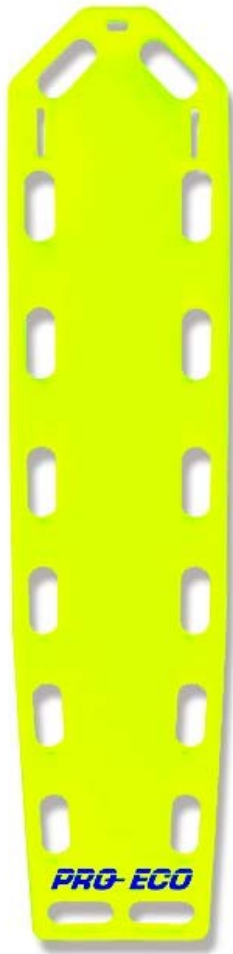
Load Test

See how the PRO-LITE™ XT holds up compared to our competitor's boards using a 300 lb patient....



PATIENT MOVING & HANDLING EQUIPMENT

PRG-ECO



- Seamless design prevents fluids from entering and eliminates cross-contamination
- Two boards can be nested together in less than 4" of space with the head immobilizer attached
- 4 year limited warranty
- Offers better patient centering and requires much less padding
- Guaranteed 100% x-ray translucent between hand holes. No rods, rails, runners, or slots in x-ray field
- Compatible with all head immobilization devices
- Available with speed clip pins for a small fee
- 500lb. patient weight capacity
- Weight: 16 lbs.
- Size: 72" X 16" 2 1/4"
- 16 - 2" x 5 1/4" hand holes
- Tapers from 16" to 14" at foot end
- Custom Mold-In graphics available for an additional fee

Product Number 719

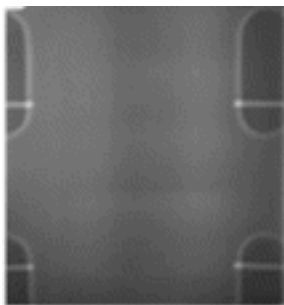
Flotation

The Pro-Lite™ ECO Spineboard (719) will float with up to 250 lbs. on it.

Stock Colors

Neon Yellow

Custom colors are available for a small fee, minimum quantities apply



X-Ray Translucent

The Pro-Eco is guaranteed 100% x-ray translucent between hand holes. No rods, rails, runners, or slots in x-ray field

PATIENT MOVING & HANDLING EQUIPMENT



PRO-LITE™ Mass Casualty Incident board

- Seamless design prevents fluids from entering and eliminates cross-contamination
- Two boards can be nested together in less than 4" of space
- Guaranteed 100% x-ray translucent between hand holes. No rods, rails, runners, or slots in x-ray field
- Compatible with all head immobilization devices
- 4 year limited warranty
- Available with speed clip pins for a small fee
- Weight: 16 lbs.
- Size: 72" x 16" x 2 1/4"
- Tapers from 16" to 14" at foot end
- 16 - 2" x 5 1/4" hand holes

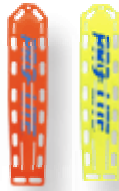
Product number 717MCI

Flotation

The Pro-Lite™ MCI Spineboard (717MCI) will float with up to 250 lbs. on it

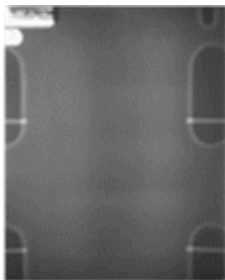
Stock Colors

Orange, Neon Yellow



Additional Colors in quantities over 25

Neon Green, White, Tactical Black, and Blue



X-Ray Translucent

The PRO-LITE™ MCI is guaranteed 100% x-ray translucent between hand holes. No rods, rails, runners, or slots in x-ray field

GRAPHICS

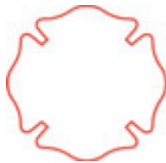
Rapid Deployment Products, Inc. offers custom molded graphics from Mold In Graphics, Inc. Unlike stickers or paints that will peel and fade, Mold In and Mold On Graphics integrate within the surface of the molded plastic, providing permanent brand identity for the lifetime of the product. These graphics are guaranteed for the life of the board under normal usage. The characters are available in 1 or 2 inch high black letters, custom logos and colored graphics are also available.

ABCDE
ABCDE



Available Symbols, One Symbol per board

- 8" Star of Life
- 8" Maltese Cross
- 4" x 7" FDNY Tribute





Manufactured by:



Graphics to read:

Please indicate direction of letters as they will appear on the board (vertical or horizontal)

Board Type: 716*__ 717__ 719__ MCI__ BLEM__

Pins: yes__ no__

Board Color: Day Glo Orange__ Neon Yellow__ Neon Green__

White__ Tactical Black__ Red__ Blue__ Other__

30 letters maximum per line (two line max.), spaces not included
 *(the 716 can only have a 1 line graphic)

Available characters:
 A B C D E F G H I J K L M N O P
 Q R S T U V W X Y Z - , .
 1 2 3 4 5 6 7 8 9 0

Symbols:
 8" Star of life
 8" Maltese cross
 4" x 7" FDNY Memorial Graphic

Rapid Deployment Products, Inc. offers custom molded graphics from Mold-In Graphics, Inc. These graphics are guaranteed for the life of the board under normal usage. The standard characters are available in 1 or 2 inch high black letters. Delivery time for stock boards is approximately 2 weeks. However, if ordering custom logos or colored graphics, please allow approximately 4-6 weeks delivery.

PATIENT MOVING & HANDLING EQUIPMENT



Do you perform "Rapid Take Down" on almost every patient?

Can you clinically justify this practice? "Rapid Take Down" is intended to be reserved for the multi-system trauma patient with low blood pressure. You do it anyway because the short spine devices most widely available were designed decades ago, in the day of bench seats and big cars. They just do not work well in today's bucket seats. They are nearly impossible to clean, disinfect and just take too long to apply. Why place your patient at risk of permanent disability when now you can do the job right without compromise?

- Weight: under 6 lbs.
- Board dimensions: 31" x 12" x .5"

Product Number: 710, board only

- Kit includes board, carrying case, set of four color-coded straps, head wedge, and head/chin tapes

Product Numbers:

710K, full kit

710DK, disposable full kit

710RS, set of three color-coded straps

710BAG, carrying case

710HB, reusable head wedge

710DHB, disposable head wedge

710HC, head/chin tapes



Applying the Speedboard to a victim...

To apply the SPEEDBOARD, first have Rescuer Number 1 hold & maintain cervical immobilization while Rescuer Two applies the appropriately sized Cervical Collar. Rescuer One should maintain Cervical Stabilization during entire SPEEDBOARD application process. Rescuer Two should carefully insert SPEEDBOARD behind patient only far enough down so that the top two knotted ends of the Yellow and Orange straps, where they attached to upper slots on SPEEDBOARD are **EVEN WITH THE TOP OF THE PATIENT'S SHOULDERS**. Then push all the strap buckle ends back through the handhold to free them for use. As soon as practical, move the Head Support to position it behind patient's head. Pad neck area for additional support.

Attach top two Yellow and Orange straps "crisscross" style using care to keep straps feeding through buckles straight, while applying **FIRM** tension to tighten upper straps to shoulders and up into armpits. This should secure shoulders positively. Then attach and tighten the White waist belt. Last secure forehead and chin/collar to Headpiece using disposable Head/Chin Tapes provided. Always continuously monitor the Airway, and be sure neither Head or Chin Tape interfere with respiration. Maintain neutral alignment of the spine at all times.

PATIENT MOVING & HANDLING EQUIPMENT



The **PRO-SLIDE** is great for hospitals, nursing homes, morticians, X-Ray departments or EMS crews for bed stretcher transfers. The PRO-SLIDE has the most hand holes (12) available on the market for quick grip. The PRO-SLIDE can also be permanently marked with your organization's name in MOLD-ON Graphics guaranteed for the life of the PRO-SLIDE.

PRO-SLIDE Adult

- 3/16" x 18" x 72" HDPE Anti-Static Plastic
- 100% X-Ray Translucent
- Weight: 6 lbs.
- 12 hand holes
- Extra strength and durability
- Holds RDP Inc. lifetime guarantee (Under Normal Usage)
- Mold-On Graphics for custom identification available for a small fee
- Pull Straps Available
- 100% guarantee for the life of the slide under normal conditions

Product number 720A

PRO-SLIDE Pediatric

- 3/16" x 18" x 48" HDPE Anti-Static Plastic
- 100% X-Ray Translucent
- Weight: 4 lbs.
- 8 Hand Holes
- Extra strength and durability
- Holds RDP Inc. Lifetime Guarantee (Under Normal Usage)
- Mold-On Graphics for custom identification available for a small fee
- Pull straps available
- 100% guarantee for the life of the slide under normal conditions

Product number 720P

PATIENT MOVING & HANDLING EQUIPMENT



Features:

- High Density, Roto-Molded Polyethylene plastic
- Seamless Design
- Floats over 300 lbs (with stabilizers attached)
- Haz-Mat Decon Tray with garden hose fittings for containment
- Multiple units stack together for easy storage
- Foam filled for flotation and patient insulation
- Bottom runner width fits ground ladder rails for ladder slide
- Stabilizer floats are available for an additional cost, and must be used for water or ice rescue
- Various strapping and harness accessories available for an additional cost
- Speed clip pins available for a small fee

Sled Specs:

- 35 lbs.
- Length: 85.42"
- Width: 27.94"
- Thickness: 8.86"
- Runner Width: 3" each
- Patient Nest Length: 77.56"
- Patient Nest Width: 18.50"
- Patient Nest Depth: 4" High Sides
- Patient Nest Depth: 2.25" Low Sides
- 12 - 2" x 6" Hand Holes
- 14 - 2" x 3" Strap Harness Holes
- 4 - 3/4" Diameter Grab Rope Loop Holes



Product number for sled: 722

Product number for floats: 722STAB

Product number for tow bar: 722TOW

PEDIATRIC IMMOBILIZATION



PEDI-LITE Pediatric Spineboard

- Weights 8 lbs
- Length 48"
- 12" width at top of board, tapers to 10" at foot end
- No rods, runners or rails
- 100% X-Ray Translucent
- Foam filled for flotation & patient insulation
- Concave design for perfect patient centering & less deflection/warpage
- Kit includes: Carry case, head blocks, head/chin tapes, 4 color-coded straps, and C-Collar
- Custom Mold-In graphics available for an additional fee

Stock Colors

Neon Green

Custom colors available for a small fee, minimum quantities apply



Product numbers:

721, board only

721K, full kit

721BAG, carrying case

721DHB, disposable head blocks (head/chin tapes included)

721RS, set of four color coded straps

721C, extrication collar

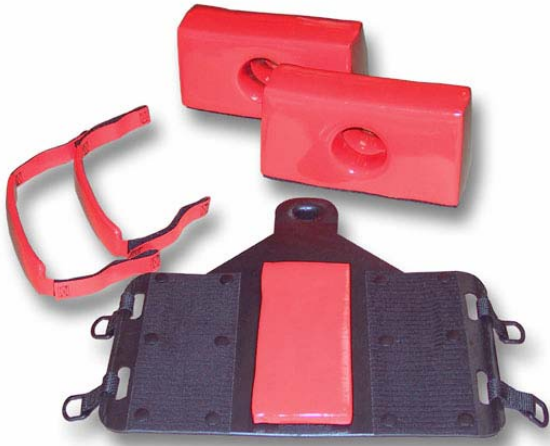
PEDIATRIC HEAD IMMOBILIZER

- Poly-dipped vinyl coated, easy to clean
- Deflects bio-hazards & prevents bacterial growth
- Ear holes for patient monitoring
- Fits all concave and flat spineboards
- X-Ray translucent & MRI/CT scanning safe
- Head/Chin straps conform to patient's head
- Extra strong D-Rings

Product number: 721HI



HEAD IMMOBILIZATION



PRO-LITE™ Head Immobilizer

- It's a snap to install the **PRO-LITE** Head Immobilizer; it's made exclusively for the **PRO-LITE** backboards. It's fast, simple and effective. Snap on/Snap off
- The base plate is made of a HDPE high-density molded plastic that is impervious to fluids. Simply snap the base plate at the top of the **PRO-LITE** backboard by aligning the three nodes with the corresponding holes on the backboard; place the palm of your hand on the base plate Velcro and squeeze the side nodes through the holes on the backboard until they snap in place. Now insert the top node into the hole. You're done!
- Closed cell foam construction of the pillows and straps provides excellent support and comfort to the patient. Plastic coating is waterproof and cleans and disinfects easily.
- The Head Immobilizer may be stored while attached to the backboard. If removing the Head Immobilizer from the backboard, pop the side out first. Do not pull back on the top to remove. Snap off.
- The Head Immobilizer pillows have large ear holes to aid in monitoring patient's blood loss or fluid drainage. No metal parts used in any of the components.
- The unique snap on/snap off feature prevents movement during street or aquatic procedures. All components are buoyant, making it ideal for water rescue and it weighs less than 2 pounds.

Product number 716HI



Specs:

- 16" width
- Pillows 10" x 6" x 5"
- 10.5" Length
- Ear Hole 3.5"
- Weights 2 LBS

Splash Head Immobilizer

- Poly-Dipped vinyl coated, easy to clean
- Deflects bio-hazards and prevents bacterial growth
- Large ear holes for patient monitoring
- Extra large pillows provide stability and head immobilization
- Fits all concave and flat spineboards
- X-Ray translucent and MRI/CT scanning safe
- Head/Chin straps conform to patient's head
- Extra strong d-rings
- Splash design unique for easy identification

Colors:

Orange with blue splash and solid orange
Custom colors are available for an additional fee, minimum quantities apply

Product number 717HI

HEAD IMMOBILIZATION



PEDIATRIC HEAD IMMOBILIZER

- Poly-dipped vinyl coated, easy to clean
- Deflects bio-hazards & prevents bacterial growth
- Ear holes for patient monitoring
- Fits all concave and flat spineboards
- X-Ray translucent & MRI/CT scanning safe
- Head/Chin straps conform to patient's head
- Extra strong D-Rings

Product number: 721HI



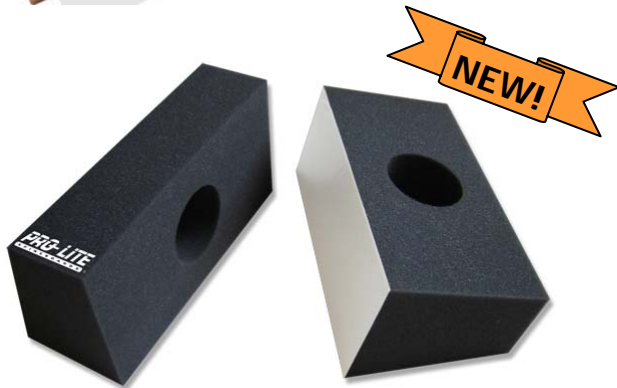
Rapid Wedge

- X-ray translucent & MRI-CT scanning safe
- Keeps occipital region of head from rolling, acting as a head chock
- Firm foam head wedge for patient stability
- Completely x-ray translucent
- Measures 14.750" x 3"
- Easy access to ears
- Can accommodate a head with helmet

Product numbers:

717RW

717RWR, with 1 head/chin tape



Disposable Adult and Pediatric Head Blocks

- 2.75" ear holes for patient monitoring
- Anti-residual sticky tape on bottom
- Adult size: 10.25" long x 5.25" tall, 2.75" wide at top and 4.125" wide at bottom
- Pediatric size: 6" long x 4" tall, 2" wide at top and 3" wide at bottom
- Includes a set of head/chin tapes

Product numbers:

Adult: 717DHB (set of 2)

Pediatric: 721DHB (set of 2)

BAGS



Collar Bag

- 24" x 11" x 6"
- Impervious Base
- High quality anti-rip material
- Fits all C-Collars, CID's/Towel rolls, and Straps
- Built to last unlike others which do not
- Heavy duty stitching

Product number 706CB



Trauma Bag

- Trauma bag made with the First Responder in mind
- Made of heavy duty Cordura ® nylon
- Two extra large end pockets and a divider inside with slots
- Removable vinyl bottom for easy cleaning
- Strap features 2" webbing luggage handle
- Available in red and navy blue
- Measures 18" L x 12" W

Product number: 700TB

Also Available:

Speedboard Carrying Case

- Bag is made of durable blue nylon
- Measures 14.5 x 33"
- Double pull wrap around zipper allows easy access to board
- Comfortable webbing handle
- Features two large interior pockets

Product number 710BAG

Pedi-Lite Carrying Case

- Bag is made of durable blue nylon
- Measures 18 x 51"
- Easy access zipper at top of bag
- Comfortable webbing handle
- Features two large interior pockets

Product number: 721BAG

STRAPS



Disposable Straps

- Replace strap when needed
- Single use for backboard, not for transport
- 2" white polypropylene, 2 piece 5' Loop Lok™
- 2" plastic side release double adjusting buckle

Product number 700DS, set of three



Speed Clip Straps

- 5' in total length
- 2" Nylon Webbing
- Metal 2 Piece Push Button Buckle
- Swivel Speed Clip
- Available in blue or red

Product number 700SC, each



Pediatric Straps

- 2" polypropylene, 2 piece Loop Lok™
- 2" plastic side release double adjusting buckle
- Color-coded for easy application

Product number 721RS, set of four



Speedboard Straps

- 2" polypropylene, 2 piece Loop Lok™
- 2" plastic side release double adjusting buckle
- Color-coded for easy application

Product number 710RS, set of three



Best Straps

- Total strap system for fast, firm immobilization
- 5 adjustable torso/limb straps and 2 over the shoulder
- Color-coded for easy application and less confusion
- Nylon webbing with Velcro® closures

Product number 700BS



Velcro Straps

- Total strap system for fast, firm immobilization
- 4 adjustable torso/limb straps, with adjustable center strap
- Two "suspender" type over-the-head shoulder straps
- Black polypropylene webbing with Velcro® closures

Product number 700VS

CONTACT US

Thomas Richmond, President
Rae Lehman, V.P. - Sales and Marketing
Helmut Bye, V.P. - Production
Christine Kunzig, Executive Administrative Assistant
Cherie Bye, Administrative Assistant

Email address: trichmond@prolitespineboards.com
Email address: rae@prolitespineboards.com
Email address: helmut@prolitespineboards.com
Email address: christine@prolitespineboards.com
Email address: cherie@prolitespineboards.com



Proudly Made In The U.S.A.



157 Railroad Drive ~ Ivyland, PA 18974
(215) 953-9190 ~ fax: (215) 354-1413 ~ toll free: 1-877-4DEPLOY