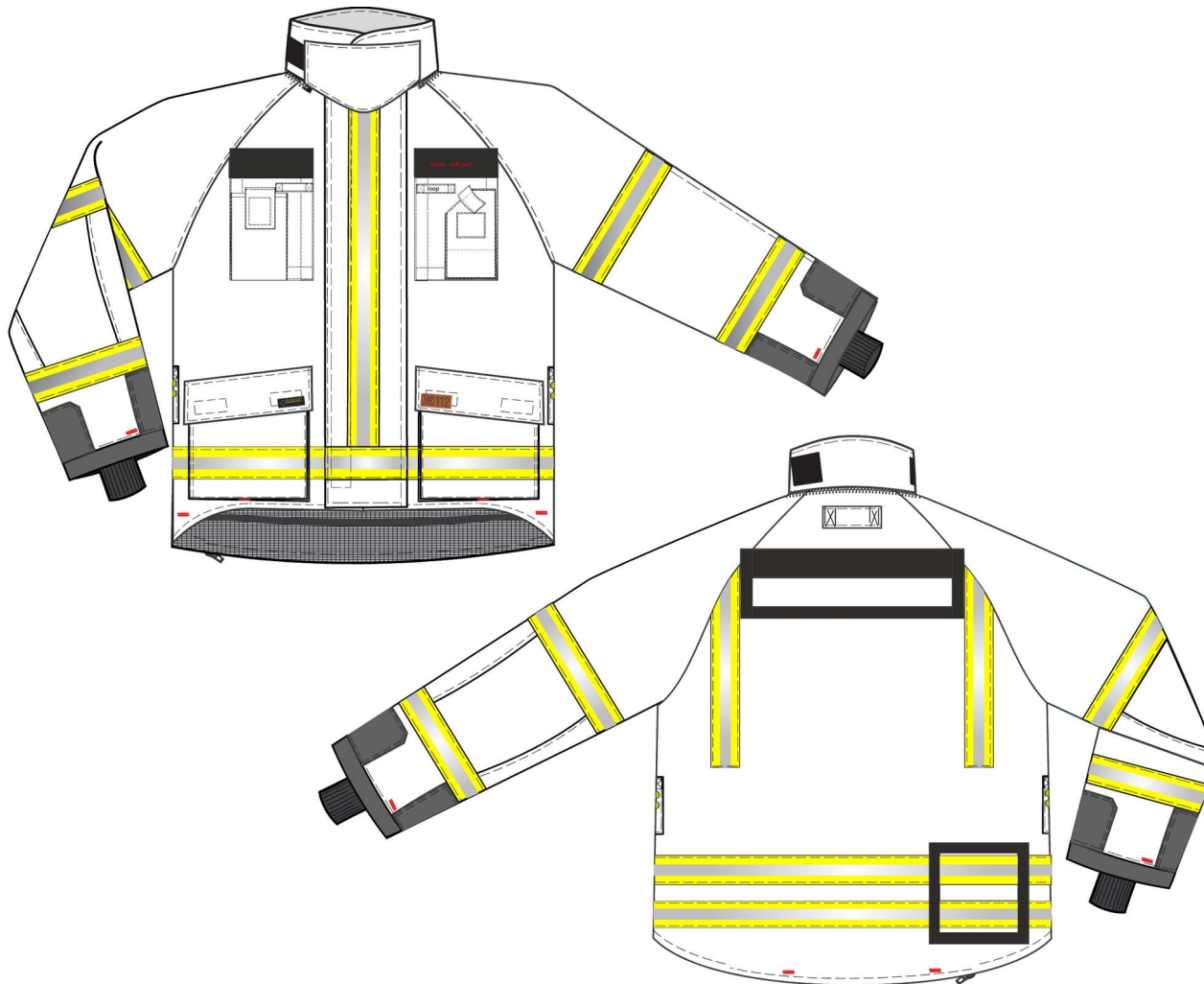


Style Descrip.	Jacket PBI MAX, 3L Airlock	PDC	Norway PDC	Status	Approved
Dev No	NO19479	Brand	Wenaas		
Gender	Male	Customer	Wenaas 112		
Entity Style No	49669-12202				
Composition	62% Para-Aramid / 36% Polybenzimidazole / 2%	Size Range Short			
Fabric weight g/m²	205	Size Range Reg	ALL, 2XS-3XL (403-410)		
Basic Pattern	49641 V1	Size Range Tall			
Pattern Ref No	49669-12202	Size Range XTall			



FIRE JACKET, PBI MAX W/3L AIRLOCK. Approved according EN 469 and Gore test

This model is made of PBI MAX fabric with Airlock 3L as a lining and also in the collar. At the lining is fixed washlabel on the piece of fabric first and it has to be taped under the seams where the washlabels is sawed on and second time above when the piece of fabric is stitched to the airlock. Zipper for reparation at the bottom of hemline. Zipper in neck for attachable Hood. Model has wide collar which gonna to be overlaps one part to the other, small flap at front which cover the big front flap at the top and velcro. Collar has Airlock 3L between main fabric and marko AT240. At back of collar is sewed soft part of velcro, it is for fasten flap when is not use.

Collar at inside is sewed all the way to "gore strap" in a neck. Each corner of collar shall have horizontal loop for possibility to get cable through. Front of jacket is closed with 1 way, 9mm metal zip hidden under frontflap closed with 1 long velcro. At inside of front flap shall be Isomex and Firecomfortliner at back side. Zipper at the bottom is partly sewed to the strap of main fabric only. At both chests are Velcro for possibility to fix the piece of fabric with different pockets. Front-Pockets with expansion forward middle front and bottom, at bottom expansion shall be done drillhole. This Pocket is close it by flaps with velcro, through these pockets is reflxtape. Hanging loops fasten hard at top of loop is sewed at side seams, they are closed by 2pcs of pressbuttons to have possibility to take away carabine hooks before the washing process. Carabine hooks shall be enclosed to the loops. 1 big mappocket under frontflap but there are 2 openings for it and pocketbag is divided on half by horizontal velcro. On top part of mappocket is vertical loop with velcro on lower part. At back on top is loop fasten with cross stitch and soft velcro's for possibility to attach ID-label. Velcro on down right side for possibility to attach ID-label. End of sleeves is finished Aramid reinforcement. On bottom of sleeves long kneeted cuffs with hole for thumb. W112 leather logo on flap on left lower pocket.

Padding isomex: 2 layer on shoulders, 1 layer at elbow area, frontflap. 1x50mm silver-yellow reflxtape at front flap, bottom of front, side pockets & vertical on back and 2x50mm on back at bottom and sleeves.

Packlite tape at inside of hem line 5cm from lowest stitch and in sleeves.

Model shall have label with p.o.number and year/month placed under the WL.

Drainage at bottom of jacket at front forward side seam, back 2 places, sleeves at back part, radio-pocket at the bottom.

attachable Pockets:

Radio Pocket for left chest

At this piece of fabric on the top/outside shall be soft part of Velcro 50mm, just under forward to middle front will be place loop (fasten by cross stitches) and shall be sew-on radio-pocket closed by strap with velcro, they have expansion at sides and bottom, drillhole on the bottom to outflow of the water. On the middle of this radio pocket is window, reinforcement fabric at bottom at inside.

Back side of this extra piece with 50mm hart part of Velcro and 30mm hard Velcro at sides and bottom.

Mobile pocket

At this piece of fabric on the top/outside shall be soft part of Velcro 50mm. Back side of this extra piece with 50mm hart part of Velcro and 30mm hard Velcro at sides and bottom.

Outside piece is sewed.on mobile pocket with expantions at sides and closed by flap with velcro. Next to the flap is placed loop (fasten by cross stitches)



Measurement Chart

StyleNo: 124405 Version:

Jacket PBI 2XS-3XL

Tech Pack Date: 27/10/2017

Style Descrip.	Jacket PBI MAX, 3L Airlock	PDC	Norway PDC	Status	Approved
Dev No	NO19479	Brand	Wenaas		
Gender	Male	Customer	Wenaas 112		
Entity Style No	49669-12202				
Basic Pattern	49641 V1				
Pattern Ref.	49669-12202				
Pattern Option					
Sample Size	M				

POM	Description	+Tol	-Tol	2XS	XS	S	M	L	XL	2XL	3XL
Ca24	½ Chest	1.50	-1.50	55.00	57.00	61.00	65.00	69.00	73.00	77.00	81.00
lb2	½ Bottom	1.00	-1.00	55.00	57.00	61.00	65.00	69.50	75.00	81.00	87.00
La26	Back Length	1.00	-1.00	79.00	80.00	82.00	83.50	87.50	91.00	95.00	98.50
Fb25	Raglan overarm - from neck seam to sleeve edge	1.00	-1.00	79.30	80.30	82.80	85.00	87.20	88.20	89.50	90.30
Fc3	½ Sleeve bottom	1.00	-1.00	17.70	18.20	19.10	20.00	20.90	21.40	22.30	22.80
Rc6	Reflex (50mm)	0.00	0.00	576.00	590.00	618.00	641.00	674.00	709.00	745.00	781.00
Nb2	Front zipper length	0.00	0.00	53.00	54.00	56.00	58.00	62.00	65.00	69.00	72.00