

WATEROUS

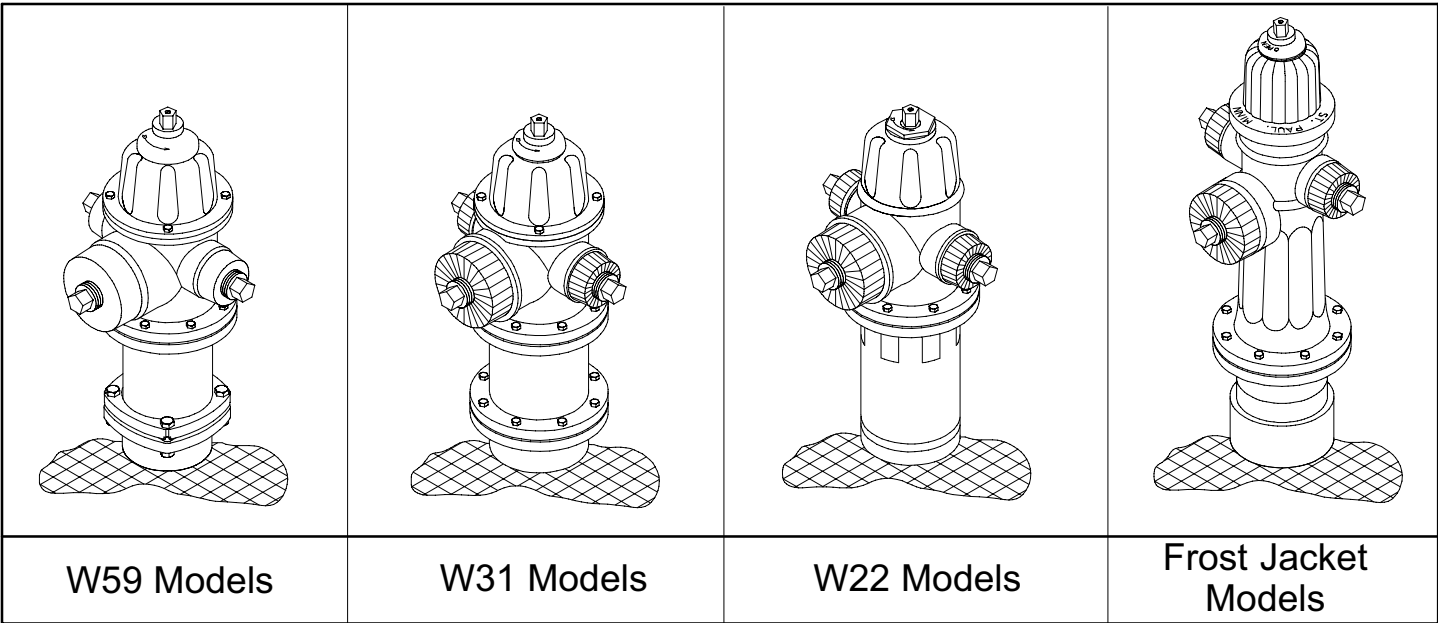
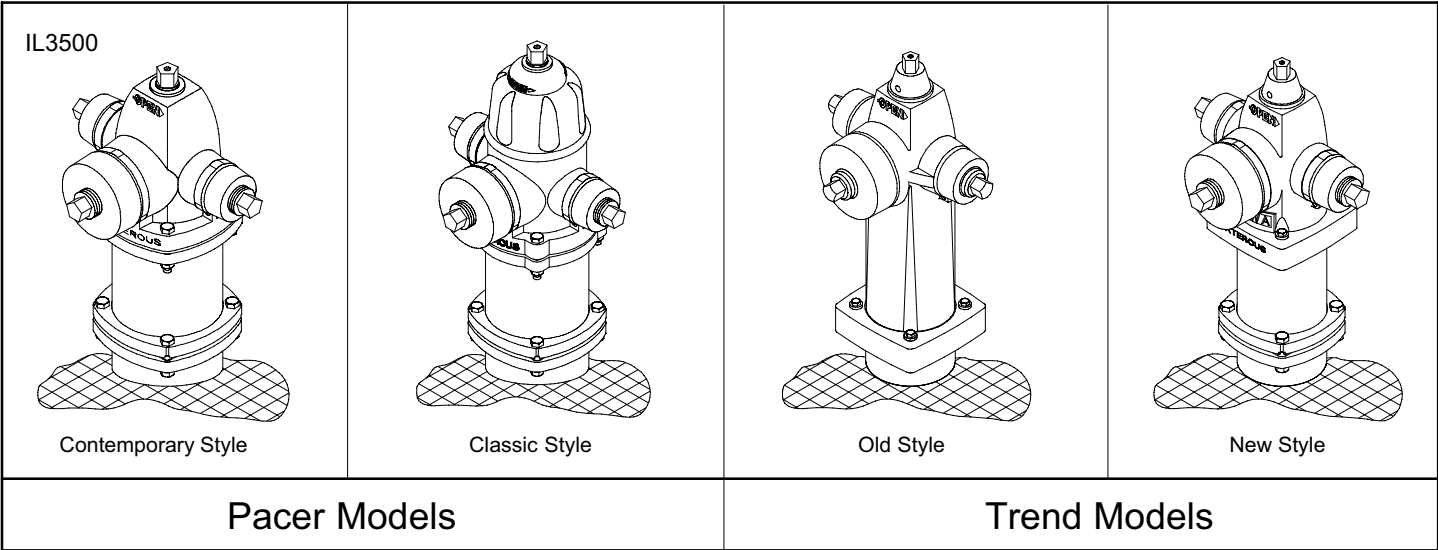
Waterous Hydrant Identification

Form No. H-368	Date 10/31/97	Revision Date 04/05/11
--------------------------	-------------------------	----------------------------------

Pacer, Trend, W59, W31, W22 & Frost Jacket Hydrants

Table of Contents

- Pacer Models**
 - Contemporary Style 1
 - Classic Style 2
- Trend Models**
 - Old Style 3
 - New Style 4
- W59 Models** 5
- W31 Models** 6
- W22 Models** 7
- Frost Jacket Models** 8
- Pattern Numbers Used to Identify W22 & W31 Models** . . 9

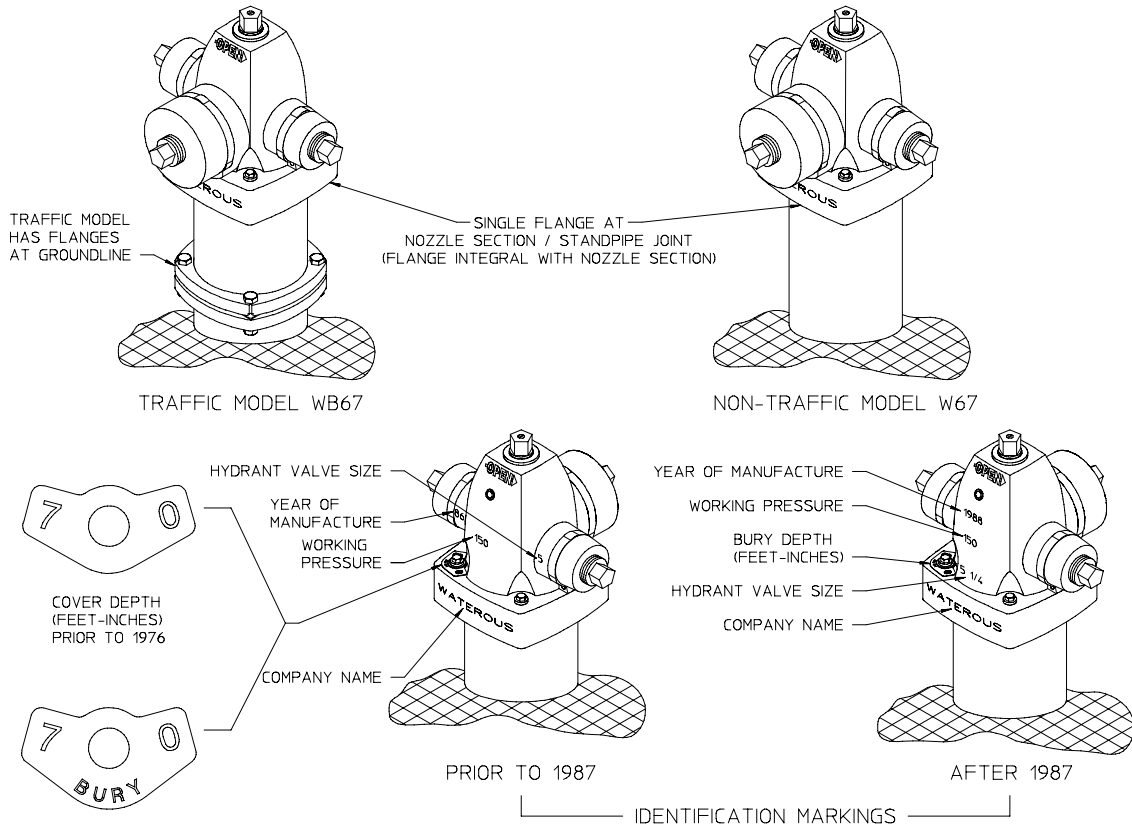


A [□] **AMERICAN FLOW CONTROL**
 American-Darling Valve and Waterous
 A DIVISION OF AMERICAN CAST IRON PIPE COMPANY

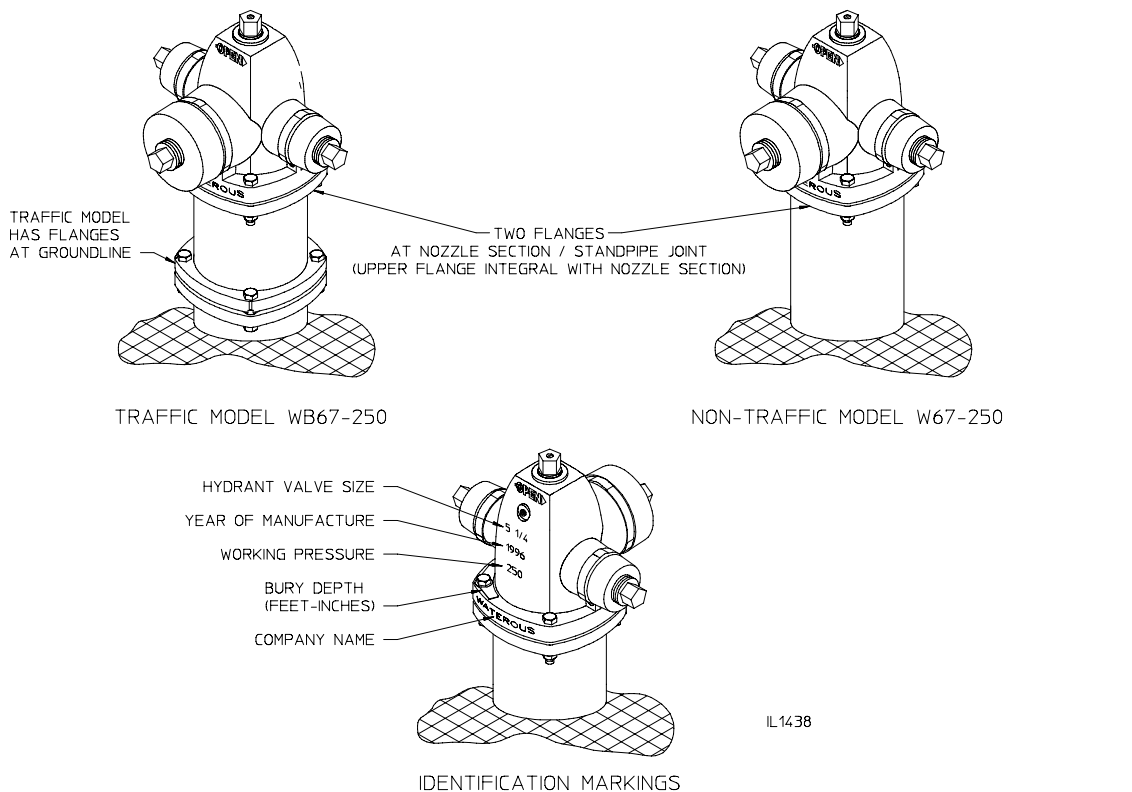


Read through instructions carefully before installing, using or repairing your Waterous hydrant and/or accessories.

Pacer Models - Contemporary Style

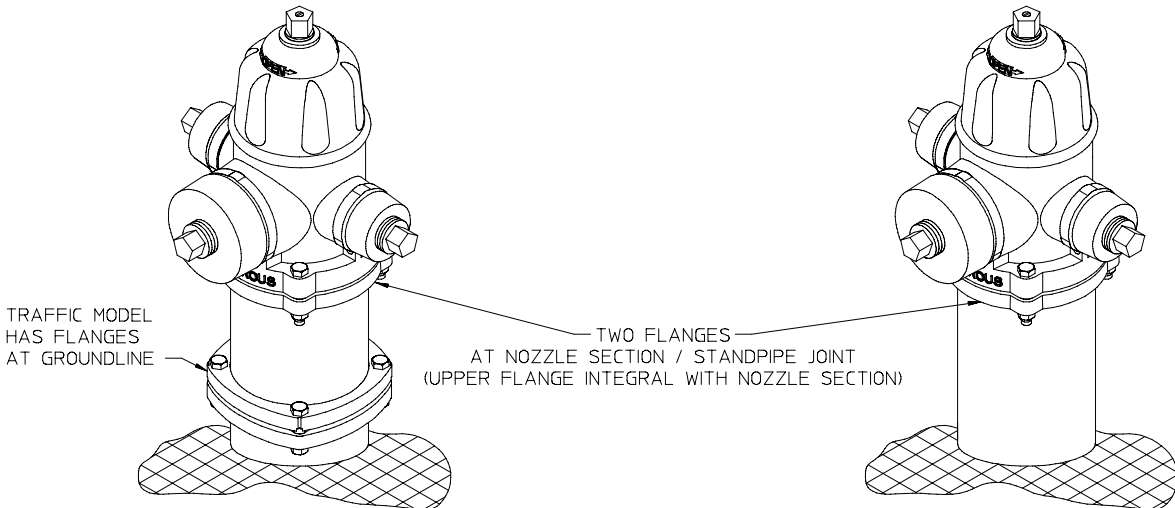


**5-1/4 in. Gray Iron Pacer - Models WB67 and W67
(150 PSIG Rated Working Pressure)
Built From 1967 to 1998**



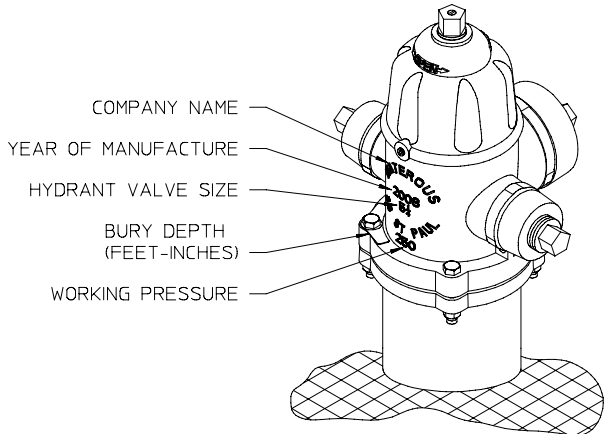
**5-1/4 in. Ductile Iron Pacer - Models WB67-250 and W67-250
(250 PSIG Rated Working Pressure)
Built From 1996 to Present**

Pacer Models - Classic Style



TRAFFIC MODEL WB67-250

NON-TRAFFIC MODEL W67-250

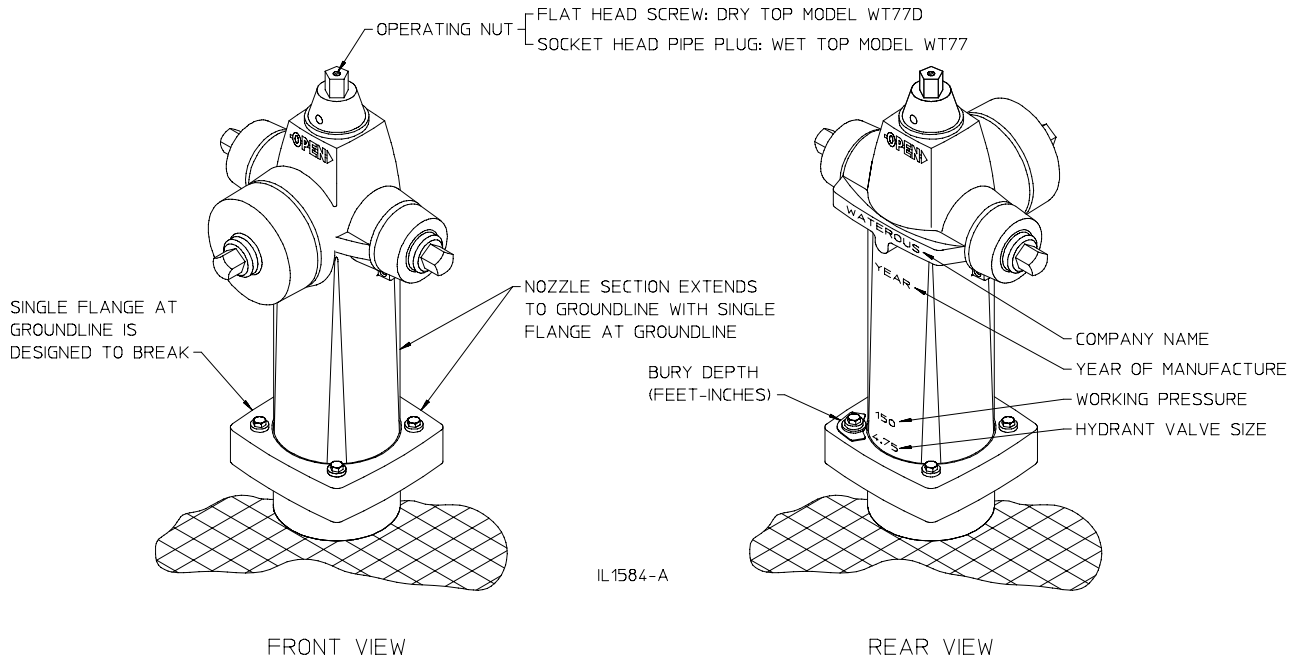


IDENTIFICATION MARKINGS

IL1438-2

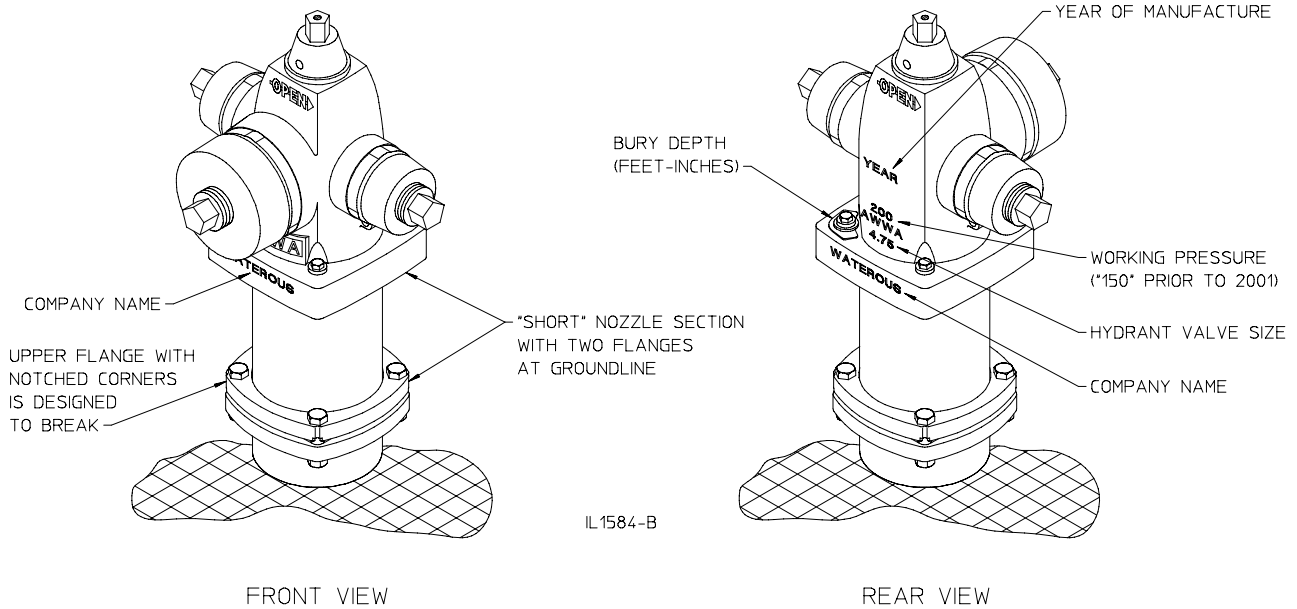
**5-1/4 in. Ductile Iron Classic Pacer - Models WB67-250 and W67-250
(250 PSIG Rated Working Pressure)
Built From 2009 to Present**

Trend Models - Old Style

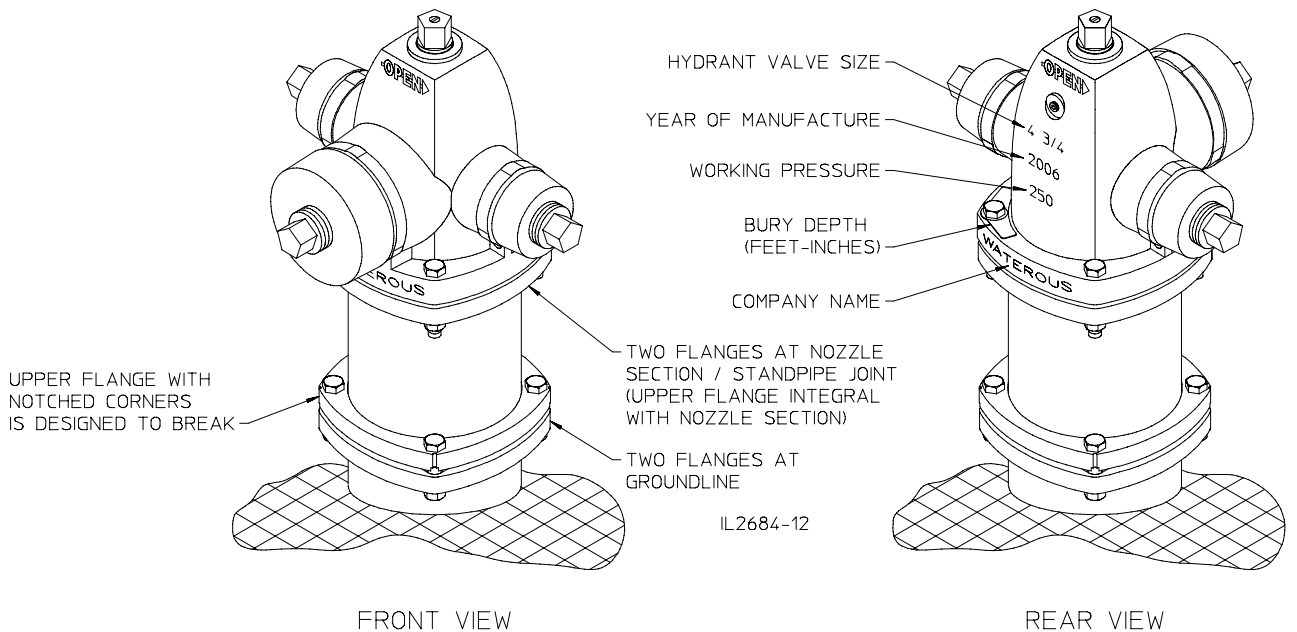


4-3/4 in. Gray Iron Trend
Model WT77D (Dry Top): Built from 1977 to 1996
Model WT77 (Wet Top): Built from 1977 to 1987

Trend Models - New Style

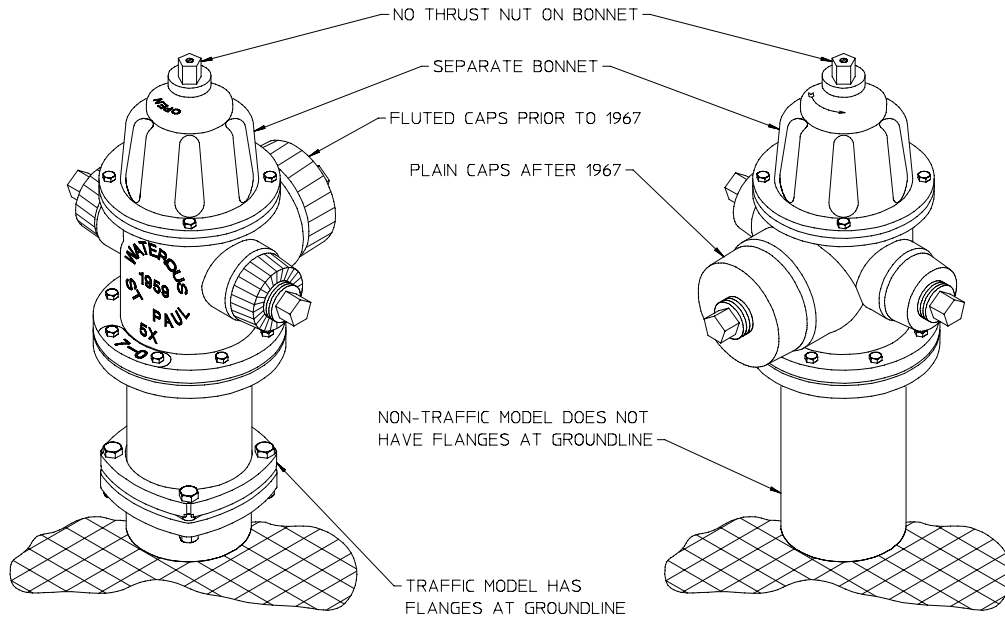


**4-3/4 in. Gray Iron Trend
Model WB77 (Dry Top): Built from 1987 to 2006**



**4-3/4 in. Ductile Iron Trend
Model WB77-1 (Dry Top): Built from 2006 to Present
(Pacer Style Design)**

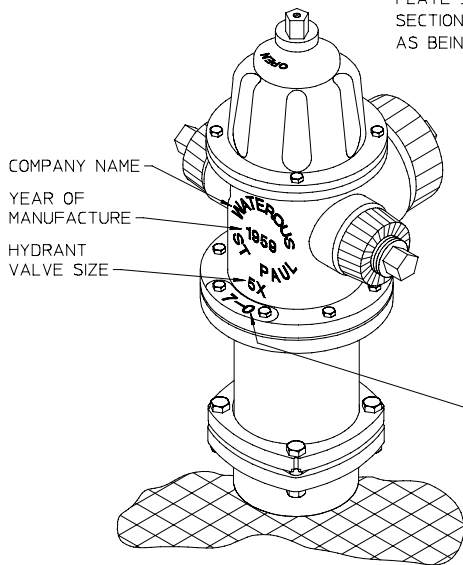
W59 Models



TRAFFIC MODEL WB59
REAR VIEW

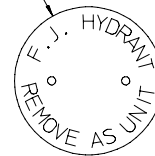
NON-TRAFFIC MODEL W59
FRONT VIEW

YEAR BUILT	MODEL	FLANGE TYPE
1959-1998	4 IN. WB59	ROUND (6) BOLT
1959-1976	6 IN. WB59	ROUND (8) BOLT
	6X5 WB59	
1959-1980	5 IN. WB59	ROUND (8) BOLT
1980-1998	5 IN. WB59	PACER (4) BOLT

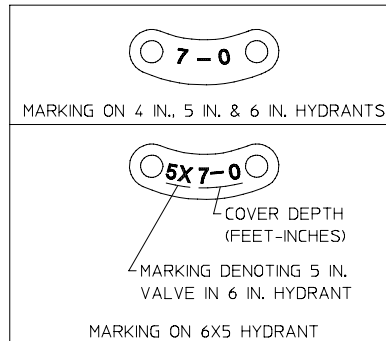


IDENTIFICATION MARKINGS

PLATE 51392 IS ATTACHED TO NOZZLE SECTION WHICH IDENTIFIES HYDRANT AS BEING A CONVERTED FROST JACKET



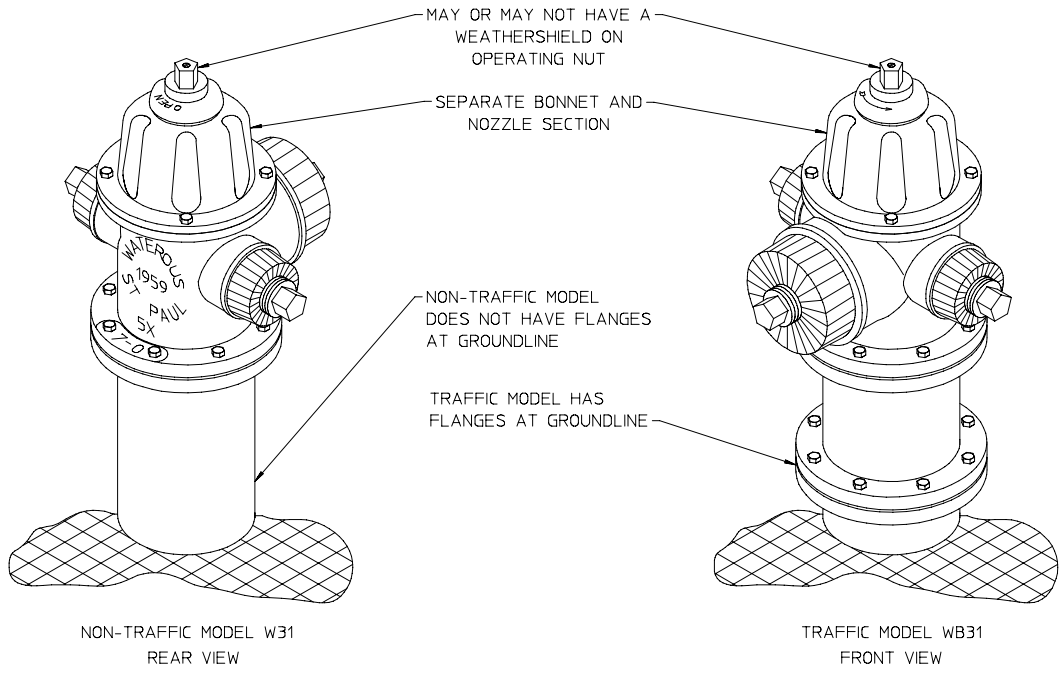
FROST JACKET CONVERSION IDENTIFICATION



IL1628

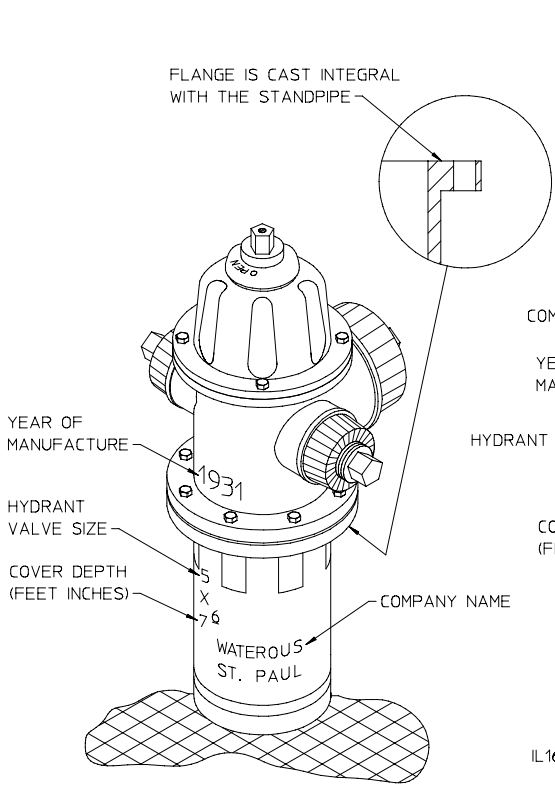
Built from 1959 to 1998
Available in Traffic, Non-Traffic and Frost Jacket Conversion Configurations
4 in., 5 in., 6 in. and 6x5 Sizes Built

W31 Models

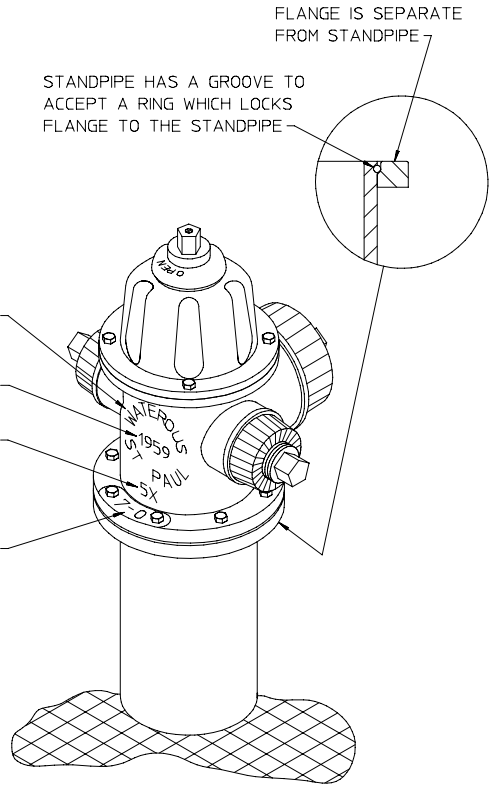


NON-TRAFFIC MODEL W31
REAR VIEW

TRAFFIC MODEL WB31
FRONT VIEW



IDENTIFICATION MARKINGS
HYDRANTS BUILT FROM 1931 TO 1959
WITH INTEGRAL STANDPIPE AND FLANGES



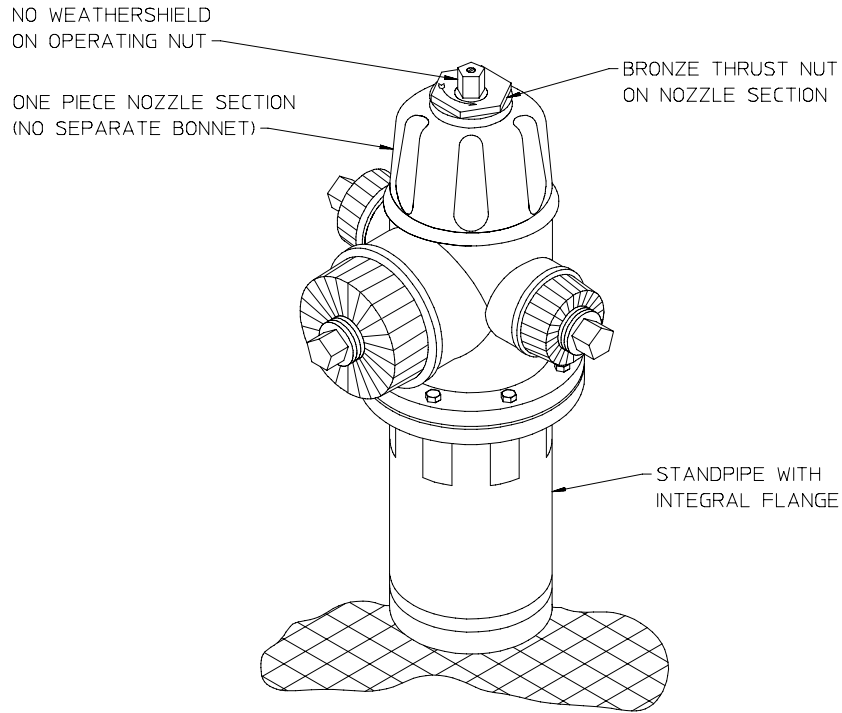
IDENTIFICATION MARKINGS
HYDRANTS BUILT FROM 1955 TO 1959
WITH SEPERATE STANDPIPE AND FLANGES

IL1629

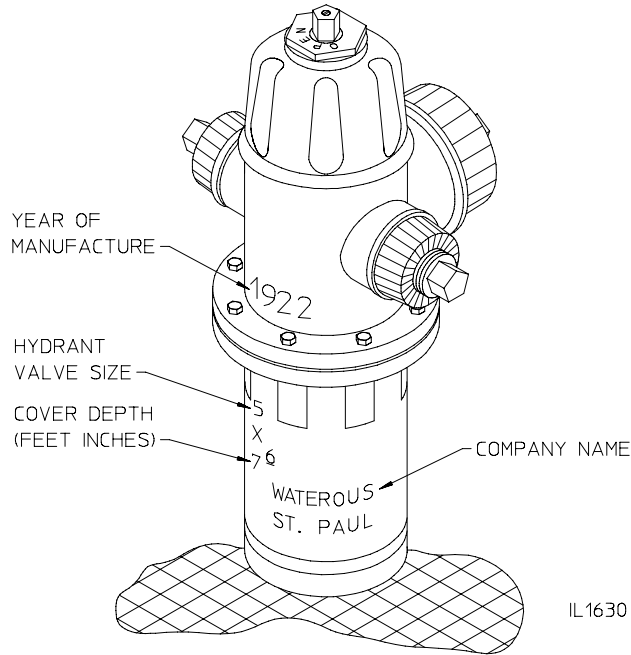
Built from 1931 to 1959
Available in Traffic or Non-Traffic Configurations
4 in., 5 in. and 6 in. Sizes Built

See Page 9 for listing of pattern numbers on castings which may be used to identify W31 hydrants.

W22 Models



FRONT VIEW



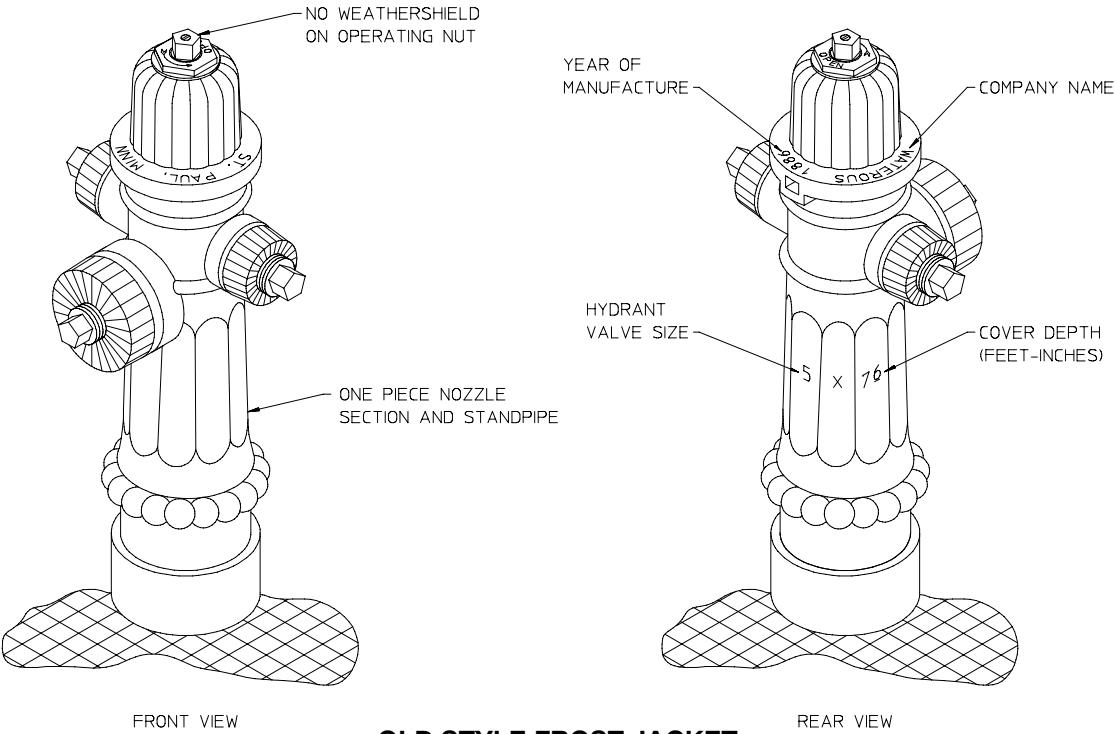
IL1630

REAR VIEW

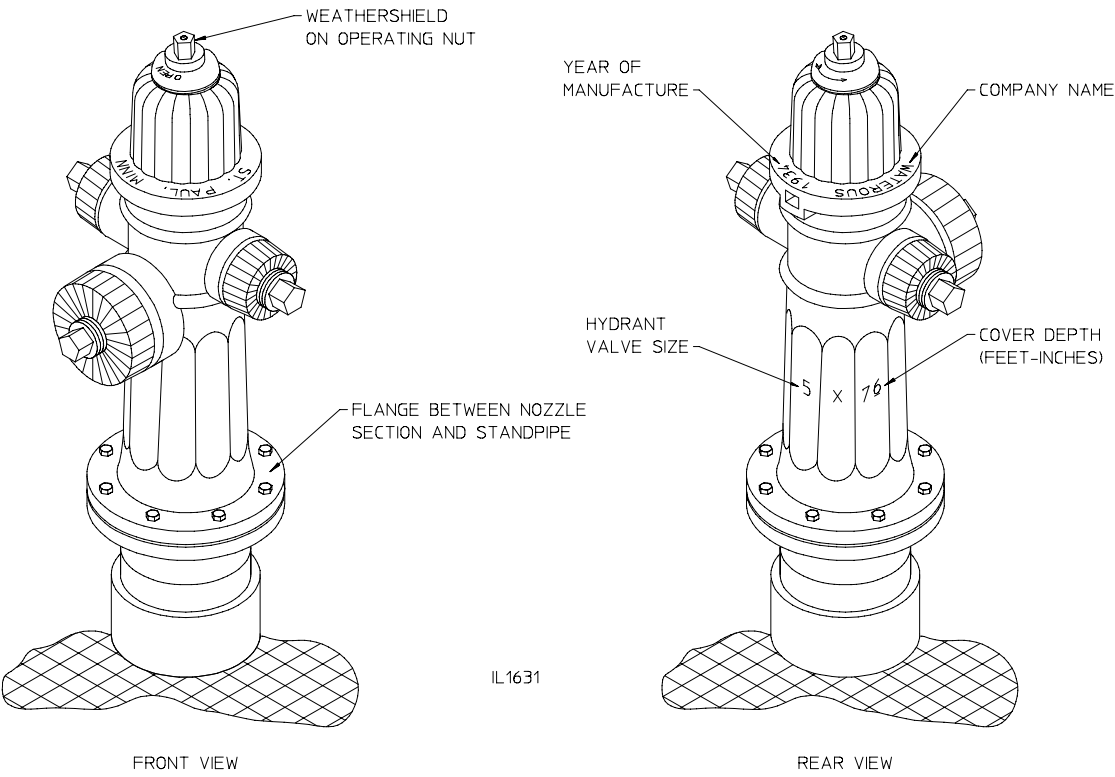
Built from 1922 to 1931
Available in Non-Traffic Configuration Only
4 in., 5 in. and 6 in. Sizes Built

See Page 9 for listing of pattern numbers on castings which may be used to identify W22 hydrants.

Frost Jacket Models



OLD STYLE FROST JACKET
Built from 1886 to 1934



IL1631

IMPROVED FROST JACKET
Built from 1934 to 1947

Built from 1886 to 1947
Available in Non-Traffic Configuration Only
4 in. and 5 in. Sizes Built

Pattern Numbers Used to Identify W22 and W31 Hydrants

Pattern No. on Casting	Description	Valve Opening	Model	Part No. or Drawing No.
W-138	Nozzle Section (DDP w/ 2-1/2" gate valves)	5 in.	W-22	T-162
W-150	Nozzle Section (DDP, threaded in)	5 in.	W-22	T-133
W-154	Nozzle Section (DDP)	5 in.	W-22	T-102
W-155	Nozzle Section (DD, 120° apart)	5 in.	W-22	T-103
W-156	Nozzle Section (DDP)	6 in.	W-22	T-85
W-157	Nozzle Section (PD, 120° apart)	6 in.	W-22	T-130
W-161	Nozzle Section (DDP)	4 in. (3)	W-22	T-65
W-162	Nozzle Section (DD, 120° apart)	4 in. (3)	W-22	T-64
W-164	Nozzle Section (PP w/one gate valve)	6 in.	W-22	T-147
W-175	Nozzle Section (DDP w/ 2-1/2" gate valves)	4 in. (3)	W-22	T-200
W-178	Bonnet	5 in.	Milwaukee	T-210
W-190	Nozzle Section (DDP)	5 in.	W-22	T-233
W-191	Nozzle Section (DDP)	5 in.	W-31	7142
W-192	Bonnet	5 in.	W-31	7139
W-196	Nozzle Section (DD, 120° apart)	5 in.	W-31	7141
W-197	Bonnet	4 in. (3)	W-31	7182
W-198	Nozzle Section (DD, 120° apart)	4 in. (3)	W-31	7079
W-199	Nozzle Section (DDP)	4 in. (3)	W-31	7081
W-200	Bonnet (DDD)	5 in.	W-31	T-246
W-201	Nozzle Section (DDD, w/gate valves)	5 in.	W-31	T-247
W-208	Nozzle Section (DD, 120° apart)	6 in.	W-31	7099
W-209	Bonnet	6 in.	W-31	7107
W-210	Nozzle Section (DDP)	6 in.	W-31	7100
W-211	Nozzle Section (DP, 120° apart)	6 in.	W-31	7103
W-216	Nozzle Section (DDP)	6 in.	W-31	7102
W-220	Nozzle Section (PP, 120° apart)	4 in. (3)	W-31	T-178
W-224	Nozzle Section	4 in. (3)	W-31	T-290
W-241	Nozzle Section (PP, 120° apart)	5 in.	Milwaukee (2)	T-314
W-262	Nozzle Section (DDP)	5 in.	Milwaukee (2)	T-330
W-282	Nozzle Section (DD, 120° apart, threaded in)	5 in.	Racine (2)	T-346

NOTES:

1. Pattern numbers may not show on all castings. "T" numbers do not show on casting, part numbers may show on some castings.
2. See Kit K-420 for replacement nozzle section assembly (DDP only).
3. Nozzle section and bonnet for 4 in. valve opening also used on 4-1/2 in. valve opening.