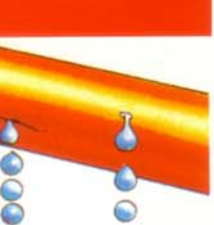


VETTER PIPE SEALING SLEEVES



Pipes conveying toxic liquids can cause serious damage, even if they spring the minutest of leaks through the smallest of cracks or holes. That damage can be contained immediately with Vetter Pipe Sealing Sleeves.

The sleeves staunch leaks at any operating pressure up to 16 bar (232 psi), and temperatures up to 80°C/176°F. Their inner sealing sleeve made of chemical-resistant Perbunan.



APPLICATIONS:

For mechanical sealing of pipelines operating at up to 16 bar (232 psi).

Useful equipment for fire brigades, in the chemical industry, at water works and district heating plants

SIZES:

9 sizes from 1/2" to 4"

ADVANTAGES:

Withstand backpressure of 16 bar (232 psi)

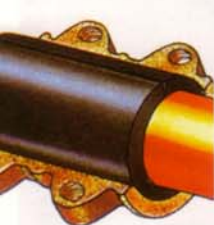
Seal cracks and holes even in the smallest pipe sizes down to 1/2"

Require no compressed-air

Fastened with 4 to 6 socket head cap screws

Suitable as lasting fixtures

7 sizes in portable case



SAFETY:

Mechanical fastening

Proven thousandfold

MATERIAL:

Malleable iron

Perbunan sealing

Heat-resistant up to 80°C/176°F

ACCESSORIES:

Special sizes 3 and 4 inches

COMPLETE SET:

Set Vetter Pipe Sealing Sleeves

Art.-No.: 154 01 000

consisting of:

7 x Sealing sleeves 1/2 to 2 1/2 inches

1 x Stud driver for socket head screws

1 x Wrench for socket head screws

1 x Portable case
400 x 300 x 183 mm
(15.5 x 11.8 x 7.2 in.)

Weight: 13.1 kg (28.8 lbs)



TECHNICAL DATA:

Type	Vetter Pipe Sealing Sleeves										
Art.-No.	15401000								Art.-No. 15401020		15401021
Norminal size	inch	1/2	3/4	1	1 1/4	1 1/2	2	2 1/2	Special Sizes	3	4
Pipe diameter	mm (in.)	21.3 (0.81)	26.3 (1.02)	33.7 (1.31)	42.4 (1.65)	48.3 (1.88)	60.3 (2.35)	76.1 (3.0)	88.9 (3.5)	114.3 (4.5)	
Size (kwxhxh)	mm	140x82x40	140x88x46	140x95x49	140x107x52	140x114x52	140x127x81	140x146x105	150x163x116	160x214x142	
	(in.)	(5.4x3.1x1.5)	(5.4x3.4x1.7)	(5.4x3.7x1.9)	(5.4x4.1x2)	(5.4x4.4x2)	(5.4x5x3.1)	(5.4x5.6x4)	(5.8x6.3x4.5)	(6.2x8.3x5.5)	
Weight	kg (lbs)	0.93 (2.04)	1.10 (2.4)	1.20 (2.6)	1.38 (3.0)	1.50 (3.3)	1.73 (3.8)	2.55 (5.6)	3.35 (7.3)	5.70 (12.56)	